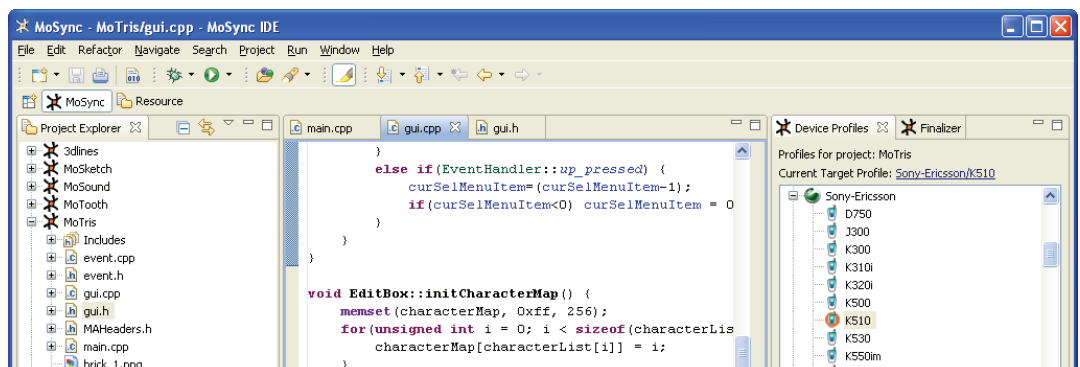


# Purple Scout

## Customer Case: Mobile Sorcery

Using a solid ide to boost product growth

Mobile Sorcery, a Swedish company creating a product for rapid application development on multiple phone platforms, hired Purple Scout for creating a state of the art, redistributable IDE for their development product



The MoSync IDE is based on Eclipse, allowing you to leverage its powerful editing capabilities. From main development using the PC runtime environment, through testing on a few phones to finalizing the build for hundreds of devices, the MoSync IDE provides support at every stage.

Purple Scout has a long history and huge experience in creating development environments based on Eclipse, thus the assignment to create a re-distributable SDK was right up our alley. One of the main requirements was a lightweight platform with a small footprint, so we started with an streamlined RCP application based on Eclipse 3.4. Since MoSync applications are written in C/C++ it was important to include a solid editing environment with syntax highlighting and code completion. Naturally we used CDT 4.0 for that (even if streamlined a little). To be able to support the MoSync projects we created customized wizards and project types. The nature of a MoSync project is that it contains multiple targets and for that we created a set of new views where deployment targets can be managed.

Overall it was a successful project that is now available as a free download on the web! Go to <http://www.mosync.com/> and download a copy today!

"From the very first meeting we new that Purple Scout could deliver what we wanted. The Purple Scout team was so well prepared on our wish list so we signed up on the spot. We have not regretted our decision since then. Purple Scout delivered on their promises"

Henrik von Schoultz  
VP Business Development, Mobile Sorcery

